



CCSD 89

Community Engagement



**In Community Consolidated School District 89,
we empower all learners to recognize and optimize
their full potential.**



CCSD 89 strategic plan



Academic Success

CCSD 89 will provide an engaging and supportive learning environment that inspires **every single student** to reach their full potential.



Social emotional development

CCSD 89 will provide a welcoming educational environment where **every student** can develop confidence, empathy, and well-being.



High quality staff

CCSD 89 will hire, retain, and support a highly qualified workforce.



Community engagement

CCSD 89 will cultivate meaningful partnerships with families and community agencies to enrich learning opportunities.



Effective use of resources

CCSD 89 will use resources responsibly to provide safe schools where students have the tools they need to learn.

We are passionate about our students' success and committed to building a stronger community.

- We have hundreds of learning spaces across our five schools that are used every day to keep students safe, inspired, and educated.
- In our family-focused district, we all work together to ensure **every single student** in our district is successful.



That collaboration creates a well-balanced learning environment for our students.



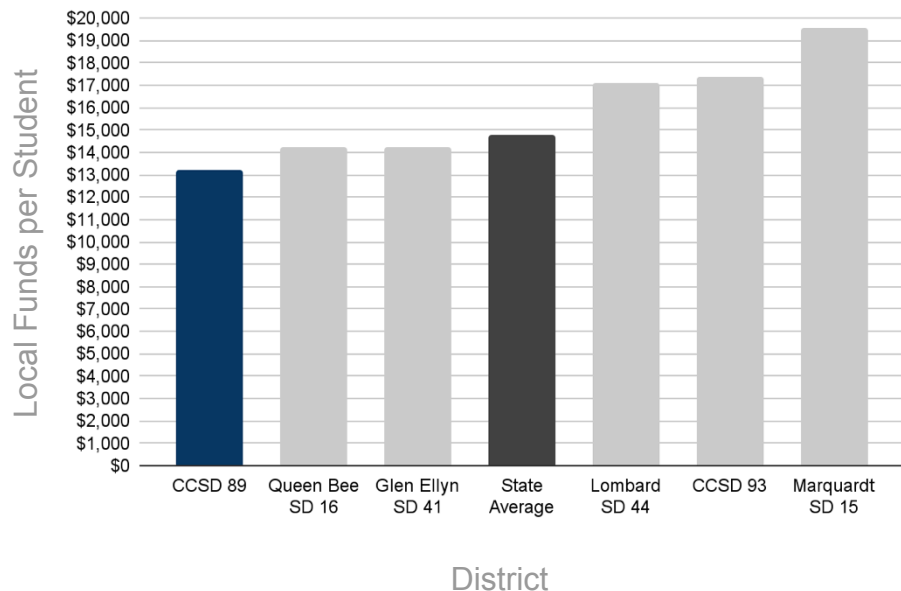
- This environment helps them succeed academically, socially, and emotionally.
- **It's working: our students achieve the highest Illinois Assessment of Readiness (IAR) scores of all Glenbard feeder schools and rank in the top 15 percent in the nation for academic achievement.**

Even while being one of the highest performing districts, we are one of the most fiscally conservative.

District	Year	Average operating expenditure per student	Percentage of students meeting or exceeding standards in <u>reading</u> on IAR	Percentage of students meeting or exceeding standards in <u>math</u> on IAR
CCSD 89	2019	\$13,186	62%	60%
Queen Bee SD 16	2019	\$14,204	46%	34%
Glen Ellyn SD 41	2019	\$14,229	55%	60%
State average	2019	\$14,747	38%	21%
Lombard SD 44	2019	\$17,073	49%	38%
CCSD 93	2019	\$17,385	49%	38%
Marquardt SD 15	2019	\$19,564	29%	38%

SOURCE: IAR test results, CCSD 89 Annual Financial Report (FY 2018-2019)

Operating spending among Glenbard feeder schools



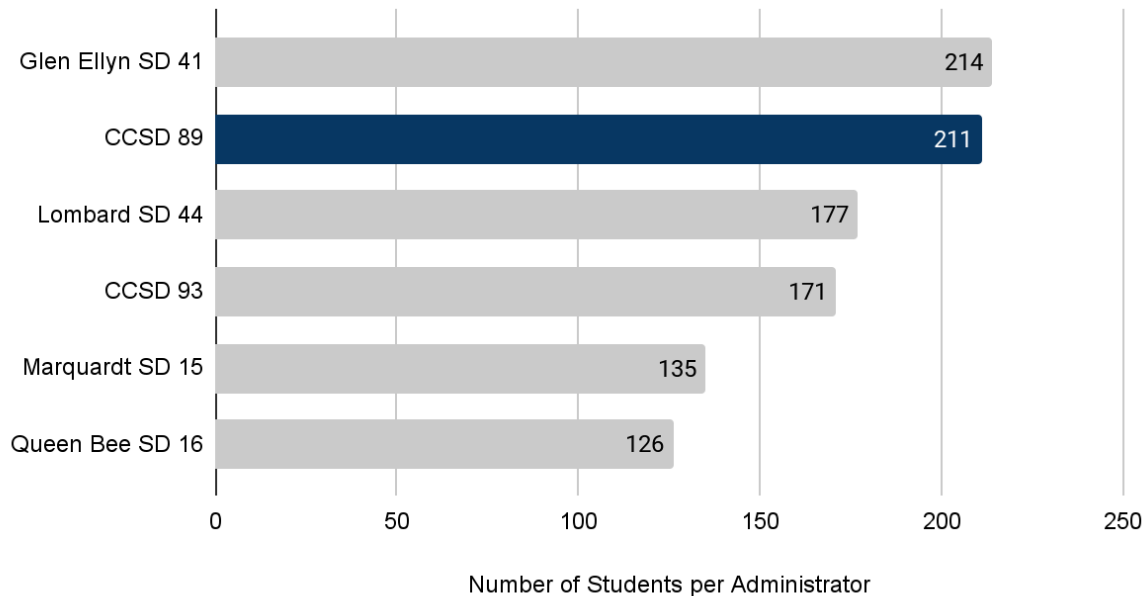
We made nearly \$3 million in cuts from 2008-2018, and we continue to creatively find savings for taxpayers through joint purchasing, grants, federal funding, and smart policies.

As a result, our district spends the lowest per pupil of all Glenbard feeder schools and the fifth lowest of all elementary districts in the county.

SOURCE: Illinois School Report Card FY 2019-2020

Our student-to-administrator ratio is the third-best in all of DuPage County.

Student to Administrator Ratio for Glenbard Feeder Schools



SOURCE: Illinois School Report Card FY 2018-2019

The biggest challenge facing us today, and for the past two years, is the COVID-19 pandemic.



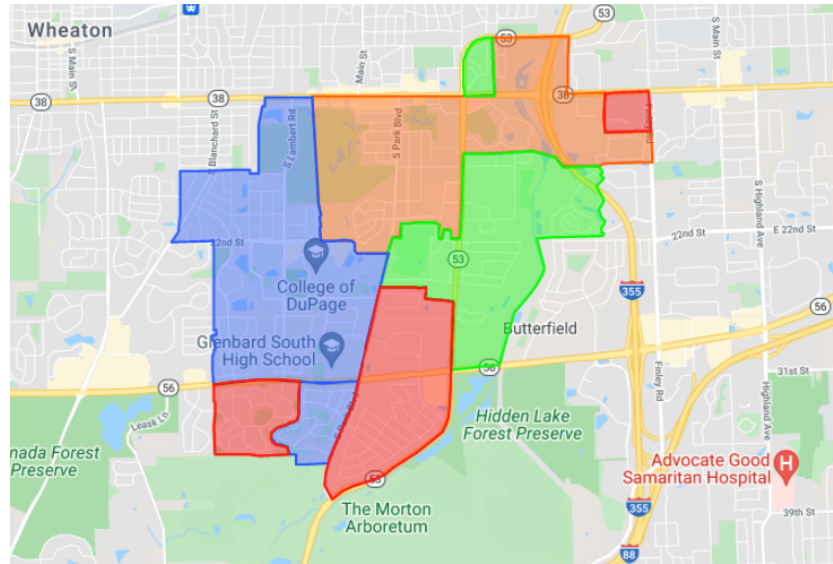
- Keeping our students and staff healthy while keeping kids in school has been our top priority.
- We've upgraded ventilation systems, implemented key mitigation practices, hired additional custodians and lunchroom staff.
- Many of these improvements will continue beyond the pandemic.

While we stay focused on our response to the pandemic, we cannot lose sight of our other major challenges.

- We need schools with clean air, secure entrances, and increased accessibility.
- All five CCSD 89 buildings are more than 50 years old, which creates significant infrastructure needs despite being well maintained.
- Enrollment has increased 12.4 percent since 2012 and is projected to continue to rise.



We've tackled major challenges together in recent years.



- Arbor View School
- Briar Glen School
- Park View Elementary School
- Westfield Elementary School

- We implemented boundary changes that eased overcrowding in one building and underutilization in another.
- We collaborated on a responsible operating-rate increase that solved our district's structural deficit and kept us from having to make budget cuts inside classrooms.

This is what CCSD 89 is known for: working calmly and deliberately as a community to proactively overcome challenges.



Our next challenge: addressing the growing infrastructure needs of our aging buildings.



This work isn't flashy, but it's necessary.



- We must maintain our district's largest physical asset and protect the community's investment in these buildings.
- We must provide our students an even safer and more comfortable place to learn and grow.
- We must continue to have clean and well-circulated air so our kids stay healthy.
- We must make our buildings more accessible for all our students.

While we're doing the best we can with limited resources, we need the community's input on the best way to address our infrastructure challenges.

- We're stretched to the limit – much of this work has been deferred as long as possible.
- With current operational funds, it would take about 20 years to complete these projects.
- Waiting that long could create health and safety problems for our district.



What is a bond?

- School districts issue municipal bonds to **fund capital projects and infrastructure.**
- Bonds proceeds may not be used for supplies, salaries, transportation.
- **Must be paid off in a fixed amount of time**, according to a fixed schedule. Bonds expire.
- Similar to a home equity loan.

Our dedication to fiscal responsibility affords us a rare opportunity to tackle this challenge while achieving property tax relief for overburdened homeowners.

In 2015, we refinanced the 2008 bonds that were still outstanding for interest savings to the taxpayers of \$664,127.

In 2018, we refinanced the 2009 bonds that were still outstanding for interest savings to the taxpayers of \$84,820.

In 2020, we made the final payment on the 2018 refinanced bond issue. Because these bonds were paid off, most CCSD 89 residents will see a reduction in their upcoming tax bill.

Because the district paid off a set of bonds that will expire in 2021, **property taxes for district residents will already be reduced by an average of \$239 per year.**

- Now we have a second set of bonds set to expire in the coming years.
- We need to consider how much of this second set of bonds to renew so we can address urgent infrastructure projects while still providing property-tax relief.

In the coming months, our community will collaborate on a long-term infrastructure plan for our schools.

While other districts pursue tax increases to build expensive new buildings, we will develop a fiscally responsible plan that protects our infrastructure, improves educational environments, keeps our students and teachers safe, and provides property-tax relief.



You are driving this community engagement process.

Working directly with parents, teachers, staff, and community leaders, **we are collaborating on a path forward.**

This process has resulted in a menu of potential individual projects and funding levels for CCSD 89.

We need your continued participation so we can finalize a consensus plan for the future of our schools.

Potential individual projects

- Pavement and sidewalks
- Doors and windows
- Roofing
- Flooring
- Furniture, fixtures and equipment
- Basic renovations
- Security
- Mechanical systems
- Electrical and plumbing
- Outdoors

Pavement and sidewalks

- **Includes:**
 - Replacing parking lots, sidewalks, signage, curbs, and drainage
- **Estimated cost:**
 - up to \$4.9 million



Doors and windows

- **Includes:**
 - Replacing exterior doors, interior doors, and exterior windows
- **Estimated cost:**
 - Up to \$5.5 million



Roofing

- **Includes:**
 - Repairing, replacing roofs and skylights
- **Estimated cost:**
 - Up to \$11 million



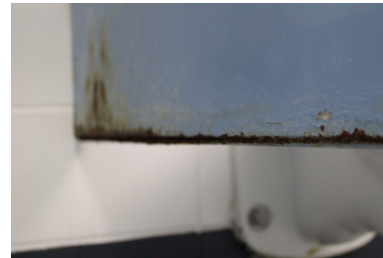
Flooring

- **Includes:**
 - Replacing and repairing flooring including vinyl, tile, and carpet
- **Estimated cost:**
 - Up to \$2.1 million



Furniture, fixtures and equipment

- **Includes:**
 - Installing wheelchair lifts and replacing certain signage, lunchroom tables and benches, toilet partitions, window treatments, lockers, countertops, acoustic panels, and basketball goals
- **Estimated cost:**
 - Up to \$3.5 million



Basic renovations

- **Includes:**
 - Minor renovating and remodeling of gymnasiums, auditoriums, kitchens, locker rooms, and other spaces
- **Estimated cost:**
 - Up to \$4.3 million



Security

- **Includes:**
 - Providing controlled and secure entrances at the two remaining schools with these needs
- **Estimated cost:**
 - \$1.3 million to \$1.4 million



Mechanical systems

- **Includes:**
 - Replacing cooling and heating mechanical units, water heaters, and ductwork
- **Estimated cost:**
 - Up to to \$4.8 million



Electrical and plumbing

- **Includes:**
 - Installing LED lighting and fire suppression systems, making ADA improvements, and replacing generators, phone systems, and exterior wall lights
- **Estimated cost:**
 - Up to to \$16.6 million



Outdoors

- **Includes:**
 - Replacing basketball goals, and flagpoles; improving outdoor learning and play areas; landscaping; drainage; and dumpster areas
- **Estimated cost:**
 - Up to \$3.6 million



Potential individual projects

- Pavement and sidewalks
- Doors and windows
- Roofing
- Flooring
- Furniture, fixtures and equipment
- Basic renovations
- Security
- Mechanical systems
- Electrical and plumbing
- Outdoors

Ranking procedures

- Rank by highest priority (1=highest, 10=lowest)
- Must rank all projects
- Rankings can only be used once, no ties
- We cannot count your rankings if you do not follow the above procedures!

Now, we will take a 10-minute break. During this time, please review the menu boards on the back wall to help complete your rankings.

Rank potential individual projects

RANK	POTENTIAL INDIVIDUAL PROJECTS
	PAVEMENT & SIDEWALKS: Replacing parking lots, sidewalks, signage, curbs, and drainage. (Estimated cost: Up to \$4.9 million)
	DOORS & WINDOWS: Replacing exterior doors, interior doors, and exterior windows. (Estimated cost: Up to \$5.5 million)
	ROOFING: Repairing and replacing roofs and skylights. (Estimated cost: Up to \$11 million)
	FLOORING: Replacing and repairing flooring including vinyl, tile, and carpet. (Estimated cost: Up to \$2 million)
	FURNITURE, FIXTURES & EQUIPMENT (FFE): Installing wheelchair lifts and replacing certain signage, tables and benches, toilet partitions, window treatments, lockers, countertops, acoustic panels, and basketball goals. (Estimated cost: Up to \$3.5 million)
	BASIC RENOVATIONS: Minor renovating and remodeling of gymnasiums, auditoriums, kitchens, locker rooms, and other spaces. (Estimated cost: Up to \$4.3 million)
	SECURITY: Providing controlled and secure entrances at the two remaining schools with these needs. (Estimated cost: Up to \$1.4 million)
	MECHANICAL SYSTEMS: Replacing cooling and heating mechanical units, water heaters, and ductwork. (Estimated cost: Up to \$4.8 million)
	ELECTRICAL & PLUMBING: Installing LED lighting and fire suppression systems, making Americans with Disabilities Act (ADA) improvements, and replacing generators, phone systems, exterior wall lights. (Estimated cost: Up to \$16.6 million)
	OUTDOORS: Replacing benches, basketball goals, and flagpoles; improving outdoor learning and play areas, landscaping, drainage, and dumpster areas. (Estimated cost: Up to \$3.6 million)

Potential funding levels

- Low funding level
- Medium funding level
- High funding level
- Maximum funding level

Low funding level

- Funds:
 - 2022-2023 infrastructure work
- Approximate funding amount:
 - \$12.7 million
- Approximate average tax impact:
 - \$143/year tax decrease*

** Based on a \$421,000 home*

Medium funding level

- Funds:
 - 2022-2024 infrastructure work
- Approximate funding amount:
 - \$17.3 million
- Approximate average tax impact:
 - \$85/year tax decrease*

** Based on a \$421,000 home*

High funding level

- Funds:
 - 2022-2025 infrastructure work
- Approximate funding amount:
 - \$22 million
- Approximate average tax impact:
 - \$27/year tax decrease*

** Based on a \$421,000 home*

Maximum funding level

- Funds:
 - 2022-2026 infrastructure work
- Approximate funding amount:
 - \$27 million
- Approximate average tax impact:
 - \$4/year tax decrease*

** Based on a \$421,000 home*

Potential funding levels

Discussion

- Funding level 1: Low funding level (\$12.7 million | \$143/yr decrease)
- Funding level 2: Medium funding level (\$17.3 million | \$85/yr decrease)
- Funding level 3: High funding level (\$22 million | \$27/yr decrease)
- Funding level 4: Maximum funding level (\$27 million | \$4/yr decrease)
- No additional funding for CCSD 89 schools

Which funding level should be pursued?

RANK	POTENTIAL FUNDING LEVELS
	LOW FUNDING LEVEL: Funds 2022-2023 infrastructure work Approximate funding amount: \$12.7 million Approximate yearly tax decrease: \$143
	MEDIUM FUNDING LEVEL: Funds 2022-2024 infrastructure work Approximate funding amount: \$17.3 million Approximate yearly tax decrease: \$85
	HIGH FUNDING LEVEL: Funds 2022-2025 infrastructure work Approximate funding amount: \$22 million Approximate yearly tax decrease: \$27
	MAXIMUM FUNDING LEVEL: Funds 2022-2026 infrastructure work Approximate funding amount: \$27 million Approximate yearly tax decrease: \$4
	NO ADDITIONAL FUNDING FOR OUR SCHOOLS

Please share your thoughts!



This process depends on your feedback. Please remember to fill out and return your feedback form.



Next steps:

- **Community-engagement sessions**

- 10 a.m. - noon Saturday, January 22, at Arbor View
- 6 - 8 p.m. Thursday, January 27, online meeting
(link will be posted on district website)

Open to anyone in the community

Same presentation at each of these meetings

- **Community phone survey in January**

- **Finance Committee meetings:**

- 6 p.m. Tuesday, February 15, at Arbor View
- 6 p.m. Monday, March 7, tentatively scheduled for district office

Thank you for being part of this community-driven collaboration.

Please continue to stay involved in this important process!

